



# Decoflood MVF606

## Decoflood MVF606

En mellanstor, rotationssymmetrisk strålkastare med tre olika ljusfördelningar och många ljuskällor att välja mellan. Decoflood 606 passar utmärkt i stadsmiljö. Det finns många tillbehör: färgfilter, bländskydd och skyddsgaller. Strålkastaren, som är väderbeständig, är lätt att rengöra och det går snabbt att utföra service.

### Fördelar

- High-performance round floodlight offering aesthetically pleasing yet rugged luminaire designs
- Extensive range of lamps offers a choice of color appearance and color rendering, with different optics for a wide selection of beam-spread patterns
- Wide range of accessories gives designers maximum flexibility in meeting increasingly stringent urban lighting requirements

## specifikationer

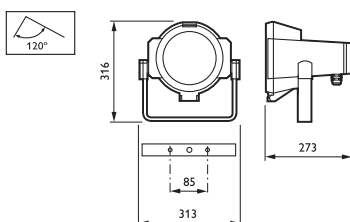
|                                      |   |                     |  |
|--------------------------------------|---|---------------------|--|
| • Type                               | MVF606  | • Installation      | Ceiling, wall or floor mounting, optional pole mounting<br>Rear access for mains connection, cable entry via M20 cable gland (2 cable glands for through-wiring facilities)<br>Protractor scale integrated<br>Ambient temperature outdoor: 35°C<br>Drag factor (Cx): 0.78<br>Projected area in horizontal position: 0.07 m <sup>2</sup><br>Max adjustment from the horizontal: -180 to +180°<br>Max vertical aiming: -30 to +90° |
| • Light source                       | HID:  | • Maintenance       | Hinged front window with quick-release fastener<br>No internal cleaning required   |
| • Lamp included                      | Yes (K or light color 830 or 942)<br>No   | • Accessories       | Solgel and glass filters in various colors, refractive glass plates, glare shield, cannon, louvers, protection grid, barndoors, base ring, accessory support   |
| • Mains voltage                      | 230 or 240 V  | • Remarks           | 'Memory ring' integrated for immediate re-aiming if the floodlight should be swivelled off-beam  |
| • Gear and compensation (integrated) | Electromagnetic (low loss), 230 or 240 V / 50 Hz:<br>- Inductive (IN)<br>- Capacitive (C)   | • Main applications | Parks, pathways, architectural flood-lighting, bridges, structures, sculptures   |
| • Optic                              | Narrow beam (NB)<br>Medium beam (MB)<br>Wide beam (WB)<br>Wide beam, large (WB-L)   |                     |  |
| • Ignitor                            | Series (SI)<br>Semi-parallel (SP)   |                     |  |
| • Options                            | Other voltages or versions without gear   |                     |  |
| • Materials and finishing            | Housing, front frame and rear cover: high-pressure die-cast aluminum<br>Glass: toughened, 4 mm thick<br>Gaskets: silicone rubber<br>Mounting bracket: paint-coated aluminum<br>End caps: polypropylene, UV-stabilized<br>Reflectors: high-grade anodized aluminum |                     |  |
| • Color                              | Housing and bracket: dark grey (GR), RAL 10714<br>End caps: light grey<br>Other RAL colors available on request   |                     |  |

## Relaterade produkter



Decoflood MVF606 flood-lighting  
luminaire

## Måttskiss



MVF606

## Tillbehör



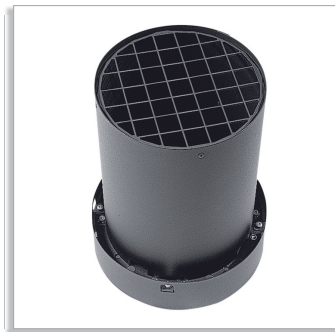
**ZVF606 BD**  
Bamdoors



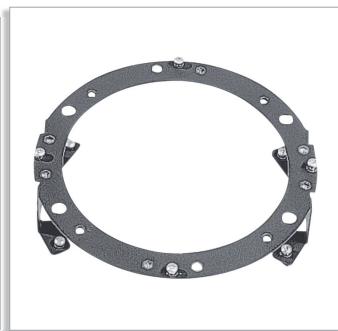
**ZVF606 GS**  
Glare shield



**ZVF606 RL**  
Round louver



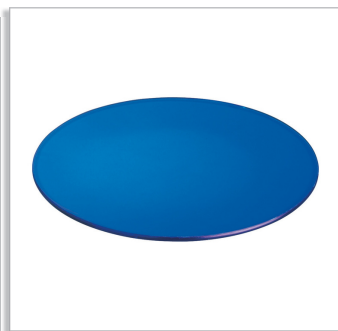
**ZVF606 CN**  
Cannon



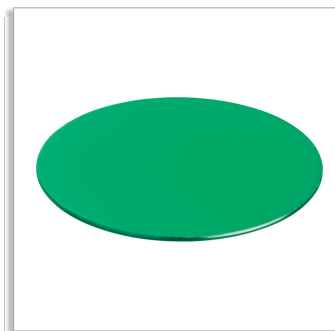
**ZVF606 ACS**  
Accessory support



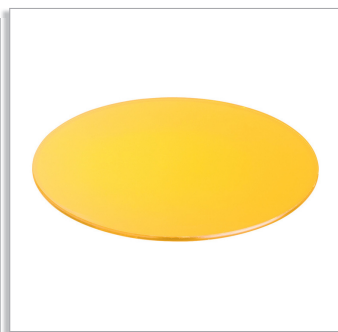
**ZVF606 BS**  
Base ring



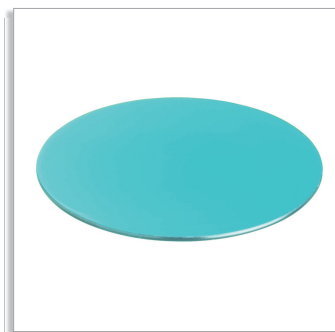
**ZVF606 SGF-BL**  
Solgel filter, blue



**ZVF606 SGF-GN**  
Solgel filter, green



**ZVF606 SGF-YE**  
Solgel filter, yellow

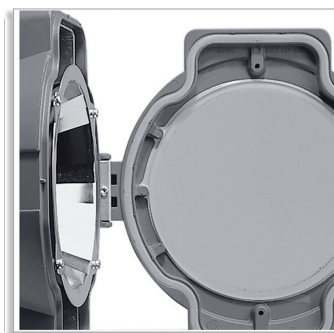


**ZVF606 SGF-LBL**  
Solgel filter, light blue

## Produktinformation



Narrow beam (NB)



Secured front glass



Medium beam (MB)



Extra-wide beam (WB-L)

## Jämför tabell

| Beställningsnummer | Produktfamilj | Typ av ljuskälla | Ljuskällans effekt | Färg | Optik | Optisk avskärmning | Förköplingsdon | Verkningsgrad | CE-märkning | ENEC-märkt | IK klass |
|--------------------|---------------|------------------|--------------------|------|-------|--------------------|----------------|---------------|-------------|------------|----------|
| 282312 00          | MVF606        | HAL-MC           | 150                | GR   | NB    | -                  | No             | -             | CE          | ENEC       | IK08     |
| 282329 00          | MVF606        | HAL-MC           | 150                | GR   | MB    | -                  | No             | -             | CE          | ENEC       | IK08     |
| 282336 00          | MVF606        | HAL-MC           | 150                | GR   | WB    | -                  | No             | -             | CE          | ENEC       | IK08     |
| 282343 00          | MVF606        | HAL-MC           | 150                | GR   | NB    | -                  | No             | -             | CE          | ENEC       | IK08     |
| 282350 00          | MVF606        | HAL-MC           | 150                | GR   | MB    | -                  | No             | -             | CE          | ENEC       | IK08     |
| 282367 00          | MVF606        | HAL-MC           | 150                | GR   | WB    | -                  | No             | -             | CE          | ENEC       | IK08     |
| 282374 00          | MVF606        | SON-T            | 70                 | GR   | NB    | UP                 | CONV           | -             | CE          | ENEC       | IK08     |
| 282381 00          | MVF606        | SON-T            | 70                 | GR   | MB    | UP                 | CONV           | -             | CE          | ENEC       | IK08     |
| 282398 00          | MVF606        | SON-T            | 70                 | GR   | WB    | UP                 | CONV           | -             | CE          | ENEC       | IK08     |
| 282404 00          | MVF606        | SDW-T            | 35                 | GR   | NB    | UP                 | CONV           | 0.68          | CE          | ENEC       | IK08     |
| 282411 00          | MVF606        | SDW-T            | 35                 | GR   | MB    | UP                 | CONV           | 0.71          | CE          | ENEC       | IK08     |
| 282428 00          | MVF606        | SDW-T            | 35                 | GR   | WB    | UP                 | CONV           | 0.69          | CE          | ENEC       | IK08     |
| 282435 00          | MVF606        | SDW-T            | 50                 | GR   | NB    | -                  | CONV           | 0.74          | CE          | ENEC       | IK08     |
| 282442 00          | MVF606        | SDW-T            | 50                 | GR   | MB    | UP                 | CONV           | 0.70          | CE          | ENEC       | IK08     |

| Beställningsnummer | Produktfamilj | Typ av ljuskälla | Ljuskällans effekt | Färg | Optik | Optisk avskärmning | Förkopplingsdon | Verkningsgrad | CE-märkning | ENEC-märkt | IK klass |
|--------------------|---------------|------------------|--------------------|------|-------|--------------------|-----------------|---------------|-------------|------------|----------|
| 282459 00          | MVF606        | SDW-T            | 50                 | GR   | WB    | -                  | CONV            | 0.70          | CE          | ENEC       | IK08     |
| 282466 00          | MVF606        | SDW-T            | 100                | GR   | NB    | -                  | CONV            | 0.61          | CE          | ENEC       | IK08     |
| 282473 00          | MVF606        | SDW-T            | 100                | GR   | MB    | -                  | CONV            | 0.61          | CE          | ENEC       | IK08     |
| 282480 00          | MVF606        | SDW-T            | 100                | GR   | WB    | -                  | CONV            | 0.60          | CE          | ENEC       | IK08     |
| 282497 00          | MVF606        | CDM-T            | 35                 | GR   | NB    | -                  | CONV            | 0.67          | CE          | ENEC       | IK08     |
| 246796 00          | MVF606        | CDM-T            | 35                 | GR   | MB    | -                  | CONV            | 0.66          | CE          | ENEC       | IK08     |
| 282510 00          | MVF606        | CDM-T            | 35                 | GR   | WB    | UP                 | CONV            | 0.69          | CE          | ENEC       | IK08     |
| 282527 00          | MVF606        | CDM-T            | 70                 | GR   | NB    | UP                 | CONV            | 0.73          | CE          | ENEC       | IK08     |
| 282534 00          | MVF606        | CDM-T            | 70                 | GR   | MB    | -                  | CONV            | 0.73          | CE          | ENEC       | IK08     |
| 282541 00          | MVF606        | CDM-T            | 70                 | GR   | WB    | -                  | CONV            | 0.71          | CE          | ENEC       | IK08     |
| 282558 00          | MVF606        | CDM-T            | 150                | GR   | NB    | -                  | CONV            | 0.72          | CE          | ENEC       | IK08     |
| 282565 00          | MVF606        | CDM-T            | 150                | GR   | MB    | -                  | CONV            | 0.71          | CE          | ENEC       | IK08     |
| 282572 00          | MVF606        | CDM-T            | 150                | GR   | WB    | -                  | CONV            | 0.70          | CE          | ENEC       | IK08     |
| 838670 00          | MVF606        | CDM-T            | 70                 | GR   | WB-L  | -                  | CONV            | -             | CE          | ENEC       | IK08     |
| 838687 00          | MVF606        | CDM-T            | 150                | GR   | WB-L  | -                  | CONV            | -             | CE          | ENEC       | IK08     |
| 838694 00          | MVF606        | SDW-T            | 100                | GR   | WB-L  | -                  | CONV            | -             | CE          | ENEC       | IK08     |
| 477121 00          | ZVF606        | -                | -                  | -    | -     | -                  | -               | -             | -           | -          | -        |
| 477138 00          | ZVF606        | -                | -                  | -    | -     | -                  | -               | -             | -           | -          | -        |
| 477169 00          | ZVF606        | -                | -                  | -    | -     | -                  | -               | -             | -           | -          | -        |
| 477152 00          | ZVF606        | -                | -                  | -    | -     | -                  | -               | -             | -           | -          | -        |
| 233802 00          | ZVF606        | -                | -                  | -    | -     | -                  | -               | -             | -           | -          | -        |
| 233796 00          | ZVF606        | -                | -                  | -    | -     | -                  | -               | -             | -           | -          | -        |
| 233772 00          | ZVF606        | -                | -                  | -    | -     | -                  | -               | -             | -           | -          | -        |
| 233765 00          | ZVF606        | -                | -                  | -    | -     | -                  | -               | -             | -           | -          | -        |
| 233789 00          | ZVF606        | -                | -                  | -    | -     | -                  | -               | -             | -           | -          | -        |
| 233758 00          | ZVF606        | -                | -                  | -    | -     | -                  | -               | -             | -           | -          | -        |



© 2011 Koninklijke Philips Electronics N.V.  
Med ensamrätt.

Specifikationerna kan ändras utan föregående meddelande. Varumärkena tillhör Koninklijke Philips Electronics N.V. eller respektive ägare.

[www.philips.com/lighting](http://www.philips.com/lighting)

2011, Augusti 16  
data som kan komma att ändras